



Belvoir Close
Kirk Hallam, Ilkeston DE7 4ND

£180,000 Freehold

A WELL PRESENTED THREE BEDROOM
MID TERRACED HOUSE SITUATED IN A
CUL DE SAC LOCATION.



ROBERT ELLIS ARE PLEASED TO BRING TO THE MARKET THIS SURPRISINGLY SPACIOUS AND WELL PRESENTED BAY FRONTED THREE BEDROOM MID TERRACED HOUSE POSITIONED AT THE HEAD OF A CUL SAC ON THE OUTSKIRTS OF ILKESTON.

With accommodation over two floors, the ground floor comprises entrance hall, spacious front to back lounge/diner and kitchen. The first floor landing then provides access to three bedrooms and a shower room.

The property also benefits from gas fired central heating from a gas fired combination boiler, double glazing, front and rear gardens, as well as a garage in an adjacent block.

The property is located in this quiet residential cul de sac location which offers easy access to the shops, services and amenities in Ilkeston town centre. There is also easy access to an array of nearby schools for all ages, transport links including Ilkeston train station which is a short distance away, as well as access to open countryside.

We believe the property will make an ideal first time buy or young family home and highly recommend an internal viewing.



ENTRANCE HALL

5'1" x 4'7" (1.55 x 1.40)

Georgian-style uPVC panel and double glazed front entrance door with matching panel and Georgian-style double glazed window to the side of the door, staircase rising to the first floor, radiator, laminate flooring, coat pegs and door to lounge/diner.

LOUNGE/DINER

22'2" x 12'2" (6.78 x 3.72)

Georgian-style double glazed bow window to the front, additional double glazed window to the rear, laminate flooring throughout, two radiator (one front, one back), media points, coving, Adam-style fire surround with marble-style insert and hearth housing a coal effect fire, useful understairs storage cupboard, door to kitchen.

KITCHEN

8'9" x 6'9" (2.67 x 2.07)

The kitchen comprises a matching range of fitted base and wall storage cupboard, with square edge butchers block-style work surfaces with inset sink unit with swan neck mixer tap, fitted four ring gas hob with extractor over and oven beneath, integrated fridge and freezer, freestanding plumbing space for washing machine (included within sale), boiler cupboard housing the gas fired combination boiler for central heating and hot water purposes, decorative brick-style tiled splashbacks, radiator, uPVC double glazed window to the rear, uPVC double glazed exit door to the rear garden.

FIRST FLOOR LANDING

Doors to all three bedrooms and shower room. Useful landing storage closet.

BEDROOM ONE

11'8" x 9'2" (3.58 x 2.81)

Double glazed Georgian-style window to the front, radiator, including within the sale triple size freestanding wardrobe.

BEDROOM TWO

9'11" x 9'2" (3.04 x 2.80)

Double glazed window to the rear overlooking the rear garden, radiator, laminate flooring, loft access point to a partially boarded, lit and insulated loft space.

BEDROOM THREE

8'5" x 5'10" (2.57 x 1.80)

Georgian-style double glazed window to the front (with fitted blinds), radiator, laminate flooring, useful overstairs storage cupboard.

SHOWER ROOM

7'10" x 4'8" (2.41 x 1.44)

Modern three piece suite comprising walk-in shower cubicle with decorative back boarding, dual attachment mains shower and glass screen/shower door, wash hand basin with mixer tap and storage cabinets beneath, push flush WC. Double glazed window to the rear (with fitted blinds), chrome ladder towel radiator.

OUTSIDE

To the front of the property there is a lawn and paved pathway providing access to the front entrance door.

TO THE REAR

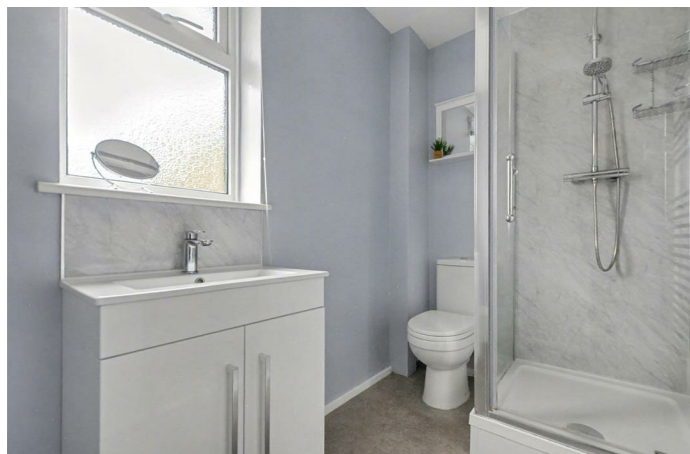
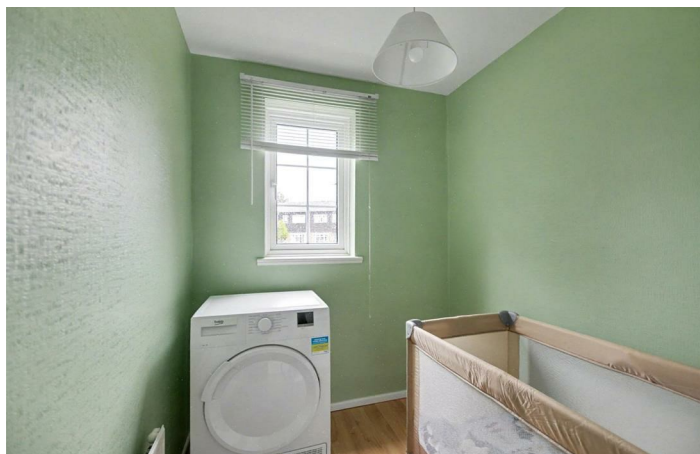
The rear garden is enclosed by timber fencing to the boundary lines, split into various sections whilst also being easy to maintain with two separate paved patio areas surrounded by decorative stone chippings and planted flowerbeds and borders housing a variety of bushes and shrubbery. Within the garden there is a double power point, water tap and plastic garden storage unit (included within sale).

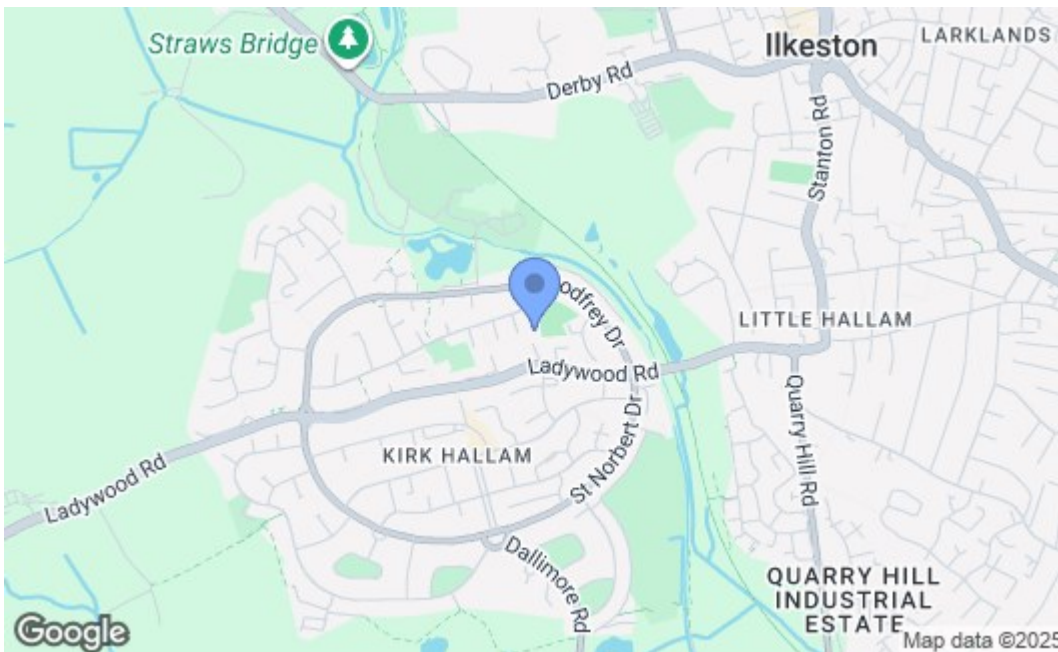
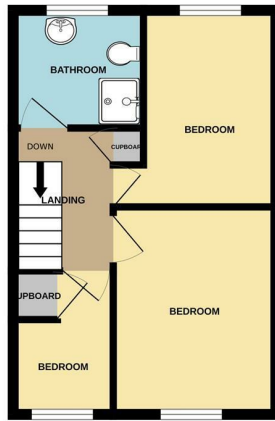
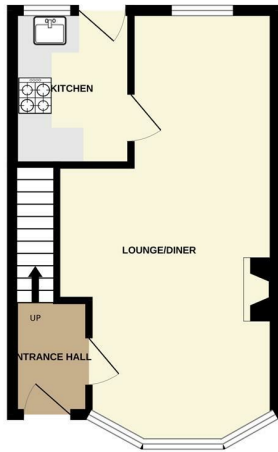
GARAGE

The property benefits from a single garage within an adjacent block with an up and over door to the front.

DIRECTIONS

Proceed away from Ilkeston town centre heading in the direction of Dale Abbey and Spondon, crossing the Bulls Head roundabout before taking an eventual right hand turn onto Belvoir Close. The property can be found at the head of the cul de sac, identified by our For Sale board.





Energy Efficiency Rating		Current	Potential
Very energy efficient - lower running costs			
(92 plus) A			
(81-91) B			
(69-80) C			
(55-68) D			
(39-54) E			
(21-38) F			
(1-20) G			
Not energy efficient - higher running costs			
		72	80
England & Wales		EU Directive 2002/91/EC	
Environmental Impact (CO ₂) Rating		Current	Potential
Very environmentally friendly - lower CO ₂ emissions			
(92 plus) A			
(81-91) B			
(69-80) C			
(55-68) D			
(39-54) E			
(21-38) F			
(1-20) G			
Not environmentally friendly - higher CO ₂ emissions			
England & Wales		EU Directive 2002/91/EC	

These details are for guidance only and complete accuracy cannot be guaranteed. If there is any point, which is of particular importance, verification should be obtained. All measurements are approximate. No guarantee can be given with regard to planning permissions or fitness for purpose. No apparatus, equipment, fixture or fitting has been tested.